



*Coláiste Bríde*  
*Guidance Counselling Service*



# Schedule

## Part 1

Current **3<sup>rd</sup> Year** Parents/Guardians/Students:

- DATs & Benefits
- Results & Impacting factors

## Part 2

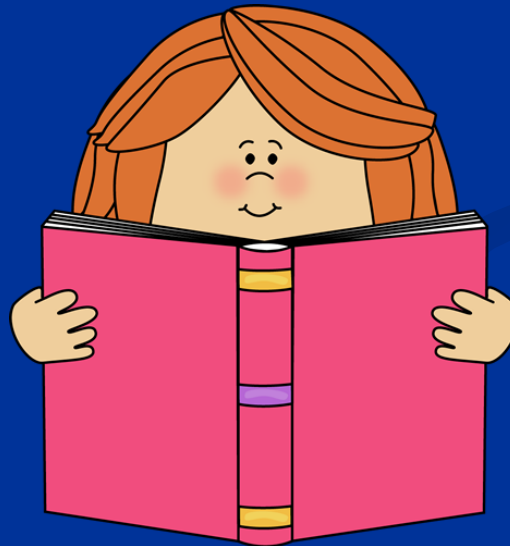
Parents/Guardians/Students entering  
**5<sup>th</sup> Year** next September:

- Senior Cycle Subject Choice



*Coláiste Bríde*  
*Guidance Counselling Service*

# DATs Results



Aisling McDonald  
(Guidance Counsellor)

# DATs Explained

- DATs - Differential Aptitude Tests
- ‘Aptitude’ - Ability in a certain area.
- DAT assess 8 different types of aptitudes/abilities.



# Eight Abilities

- 1) Verbal Reasoning
- 2) Numerical Reasoning
- 3) Abstract Reasoning
- 4) Perceptual Speed and Accuracy
- 5) Mechanical Reasoning
- 6) Space Relations
- 7) Spelling
- 8) Language Usage



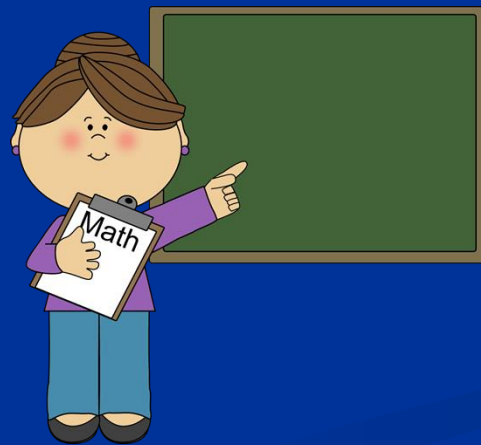
# 1 Verbal Reasoning

- How well you understand ideas expressed in words?



## 2 Numerical Reasoning

- How well you understand ideas expressed in numbers?



# 3 Abstract Reasoning



- How well do you think out problems even when there are no words to guide you?

# 4 Perceptual Speed and Accuracy

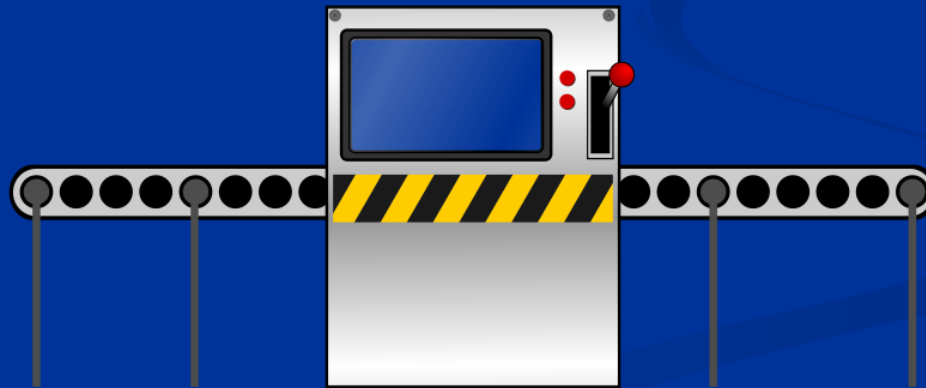
- How fast and well can you do the paperwork that is so important in all offices, scientific laboratories, stores, warehouses and wherever records are made, filed or checked?





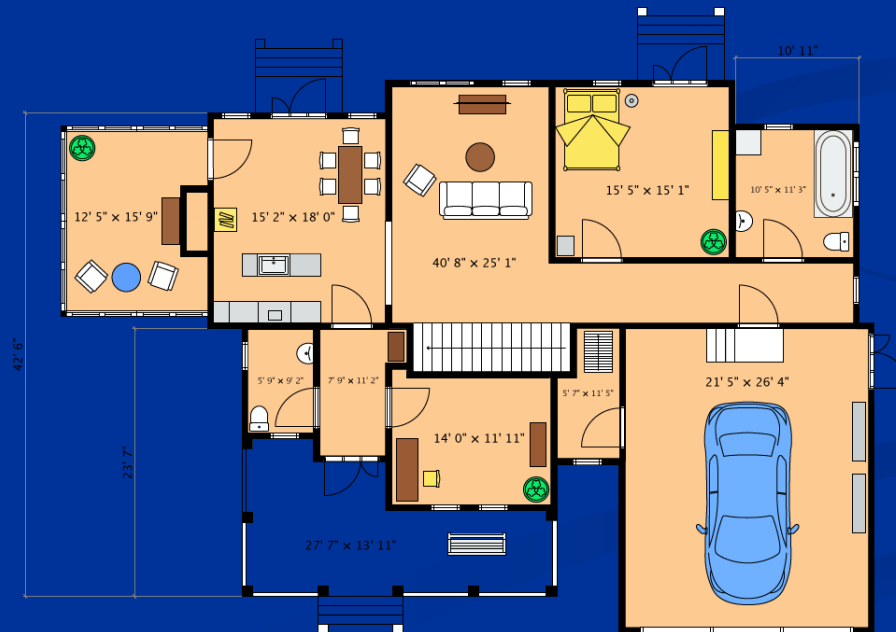
# 5 Mechanical Reasoning

- How well do you understand the laws governing simple machinery, tools and bodies in motion?

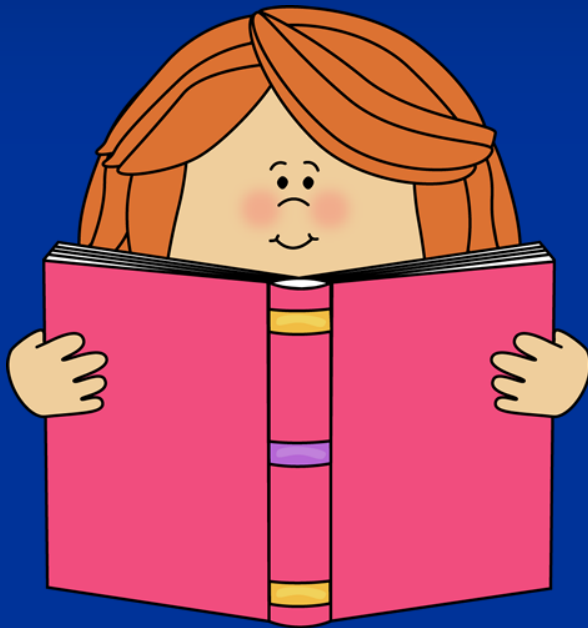


# 6 Space Relations

- How well can you visualise, or form mental pictures of, solid objects from looking at flat paper plans?



# 7 Spelling



- How well can you recognise correct and incorrect spellings of common English words?

# 8 Language Usage

- How well can you use the English language?



## 2: Numerical Reasoning

### Instructions

This is a test to see how well you can reason with numbers. Read each problem carefully. If necessary, work out your answer on rough paper. You may not use a calculator.

Look at the possible answers listed and decide which answer is *best*.

## 2: Numerical Reasoning

Example:

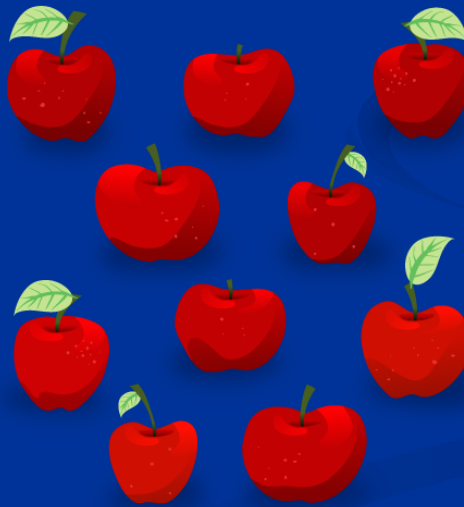
**What number continues this number sequence?**

2	4	6	8	?
---	---	---	---	---

- A     9**
- B     10**
- C     11**
- D     12**
- E     None of these**

## 2: Numerical Reasoning Solution

The correct answer is *10* because when you count by 2s, *10* follows 8 in the counting sequence.



# 8: Language Usage

## Instructions

This test consists of sentences that are divided into four parts. In many of the sentences, one of the four parts contains an error either in punctuation, capitalisation or grammar. You are to decide which one of the four parts, if any, contains the error.

Look at the example which follows.



## 8: Language Usage

Example:

Jason and Karl/ will be mowing/ the lawn/ this Weekend.

A

B

C

D

E No error

## 8 Language Usage Solution

The error is in part D because the word *weekend* should not have a capital letter.

Jason and Karl/ will be mowing/ the lawn/ this Weekend.

A B C D

E No error

# Why Use DATs for Guidance?

## Benefits:

- Experience of doing a different type of test.
- See the relationship between test results and certain subject areas at Senior Cycle.
- Begin to relate abilities to possible career areas in the future.



# DAT Results

- Results available via VShare.
- Stated in general terms in such a way that students are awarded either:

**Very High Score** *or*  
**Strength** *or*  
**Fair**

- Some scores may be joint/tied.
- Usual for students to have varied results over the 8 tests.



Coláiste Bríde

Templeshannon, Enniscorthy, Co. Wexford.

### DAT (Differential Aptitude Tests) Results

Dear Parent/Guardian,

I am writing to inform you the results of your daughter's/ward's DATs (Differential Aptitude Tests) are now available. Parents/Guardians can access test results by logging into **VShare**, using the **link** supplied.

DATs results have been stated in general terms as follows.

In each of the **8\* individual DATs** tests, a student will be awarded one of the following grades:

**Very High Score** or

**Strength** or

**Fair.**

(\*assuming all 8 tests were completed)

The purpose of the DATs is threefold:

- To give students the **experience** of doing a different type of test. In the future many of them will be asked to do aptitude tests not unlike the DATs as part of selection procedures for different job areas. It is helpful to have had previous experience of such tests.
- To help students see the *relationship* between their test results and certain **subject areas at Senior Level**. Students should take their areas of greatest strength into account when choosing Leaving Certificate subjects for Senior Cycle.

- To stimulate students to begin to relate their abilities to possible **career areas** in the future.

It should be noted that aptitude tests like the DATs are useful objective indicators of student's potential. They do not guarantee students will be successful without the usual back-ups of hard work and personal motivation.

It is usual for students to have **varied results** over the eight tests. They are likely to do well in some and less well in others, which reflects varying abilities.

The results are intended as an **aid** to students and their parents in making decisions regarding the Senior Cycle. Students should use their DAT results in conjunction with school tests and teachers' advice in deciding which **Senior Cycle subjects** will most suit them.

Please read the DAT report book carefully and discuss it with your daughter. If you have any further questions, please do not hesitate to contact the school.

Yours sincerely,

Aisling Mc Donald

(Guidance Counsellor)

---

Principal: Ms. K. O'Sullivan

Web: [www.colaiстеbride.ie](http://www.colaiстеbride.ie)

Deputy Principal: Ms. R. McConville

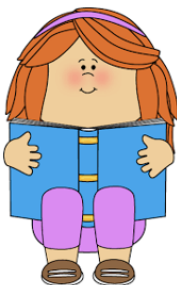
Email: [office@colaiстеbride.ie](mailto:office@colaiстеbride.ie)

Deputy Principal: Mr. N. Moynihan

Telephone: (053) 9234245

## Differential Aptitude Tests (DAT) for Guidance

### Results Booklet



Coláiste Bhríde Guidance Counselling Service



#### Explanation of the Differential Aptitude Tests (DATs)

- DATs - stands for Differential Aptitude Tests.
- An aptitude - is an **ability** in a certain area.
- DATs assess **8** important aptitudes/abilities:

- 1) Verbal Reasoning
- 2) Numerical Reasoning
- 3) Abstract Reasoning
- 4) Perceptual Speed and Accuracy
- 5) Mechanical Reasoning
- 6) Space Relations
- 7) Spelling
- 8) Language Usage

These aptitudes/abilities are explained in the following pages.

1

#### 1. Verbal Reasoning

This relates to **language** – English, Irish, French, German and also a linguistic subject such as History. This ability is used in careers where accurate communication is vital, e.g. Journalism, Public Relations, Law, Advertising, Marketing, Administration, Interpreting, Writing, Reception, and Secretarial work, Computer Programming.



#### 3. Abstract Reasoning

This involves the ability to **see relations among things** – objects, patterns, and designs – rather than words or numbers. Careers which use this ability include: Lawyer, Doctor, Veterinarian, Research Scientist, Economist, Social Worker, Nurse, Quality Controller, Consultant in Business and Finance, Detective – these careers, and any work which involves moving from evidence presented to find either a cause or a solution require a high degree of abstract reasoning. Subjects particularly relating to this ability include: Applied Maths, Chemistry and Physics.



#### 2. Numerical Reasoning

This relates to using **numbers** in subjects such as Maths, Accounting, Science (Physics and Chemistry). This ability is useful in Engineering, Science Careers, Accountancy, Actuarial Work, Marketing, Auctioneering, Banking, Insurance, Computers, Surveying, Architecture, Medicine, Optician, Radiography, Physiotherapy, Medical Laboratory Science, and Science Technician.



#### 4. Perceptual Speed and Accuracy

This refers to ability in **clerical areas**, typing, accounting, and a facility for dealing rapidly with paper work. Careers include: Secretary, Clerical Officer, Administrator, Accountant, Accounting Technician, Clerk in a Building Society or Bank, etc. Relates to all subjects.



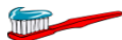
#### 5. Mechanical Reasoning

This refers to ability in **Physics, Mechanics, Engineering and any other career using machines** such as computers, typewriters, video cameras, tape recorders, printing machines. Subjects it relates to include Physics and Engineering.



#### 6. Space Relations

This refers to an ability to think in **three dimensions**, to picture mentally the size shape and position of objects when shown a picture or pattern. Careers include: Architecture, Draughting, Dress Design, Interior Design, Display, Engineering, Dentistry, Surgery, Electrical Work, and Carpentry. It has a very wide application. Subjects this relates to include Art and Design, Drawing and Geometry.



#### 7. Language Usage/ Spelling

This relates to **English** in particular. Competence in the mechanics of English is essential for all Third Level courses and most careers.



#### 8. Language Usage/Grammar

Nearly all kinds of work requiring College Level Education demand a **considerable** competence in this area.



An aptitude is an ability in a certain area. The tests show your ability in different areas which can **easily be measured**. **They do not show other abilities you may have**: Creative ability, artistic ability, social ability, athletic ability, musical ability, organisational ability, etc. Ask your parents, teachers, and friends about your abilities in these areas.

#### Coláiste Bhríde Guidance Counselling Service

Parents/Guardians and students are welcome to make an appointment with the guidance counsellor if they wish to discuss DAT results further.



Guidance Counsellor:  
Ms McDonald



Phone:  
053 9234245



Email:  
office@colaisitebride.ie



Address:  
Coláiste Bhríde,  
Templeshannon,  
Enniscorthy,  
Co. Wexford.  
Y21 EF82



*No one can discover you until you do. Exploit your talents, strengths and skills and make the world sit up and notice.*

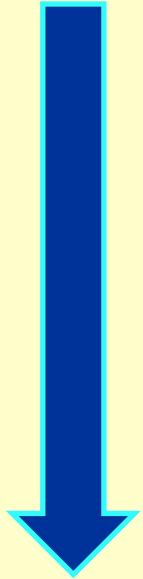
- Rob Liano

# Example 1: Verbal Reasoning

**Possible  
Subjects**

**Art, English, Geography, History, Home Economics,  
Languages, LCVP Link Modules, Music, Religious Studies.**

**Potential  
Courses**



**Careers**

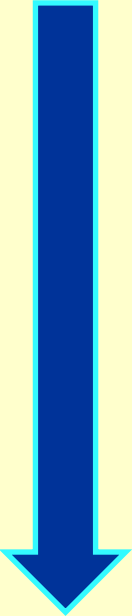
Verbal reasoning is important for work involving:

- 1) Communication of ideas**
- 2) Interpretation of written material**
- 3) Analytical thinking**

Work areas in which these abilities are required are:

- **Professional jobs** (e.g. Lawyer, Doctor, Teacher).
- **Technical jobs** (e.g. Engineer, Computer programmer).
- **Business** (e.g. Management, Sales, Marketing, Advertising).
- **Scientific work** (e.g. Medical laboratory scientist).
- **Multiple fields** of work in which communication is of primary importance (e.g. Training, Work involving the production of written material and administrative positions).

# Example 2: Numerical Reasoning

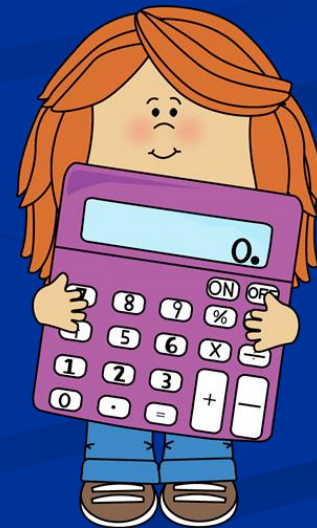
<b>Possible <u>Subjects</u></b>	<b>Accounting, Applied Maths, Chemistry, Economics, Maths, Physics.</b>
<b>Potential <u>Courses</u></b> 	<p>Important for work in the Technical professions such as <b>Science, Engineering</b> and <b>Architecture</b>.</p> <p>Important for many jobs in: <b>Business</b> and <b>Finance</b> (e.g. Banking, Sales forecasting, etc.) and is much needed for work in <b>Accounting</b>.</p> <p>In the <b>Technical area</b>, Numerical Reasoning is relevant to any sort of work in which calculations or precise measurements need to be made (e.g. Surveying, Laboratory work, Navigation, or Joinery).</p> <p>Also important for many clerical or <b>administrative jobs</b> (e.g. Local government, Accounts administration, etc.)</p>

**Careers**



# Factors Which Can Affect Test Results

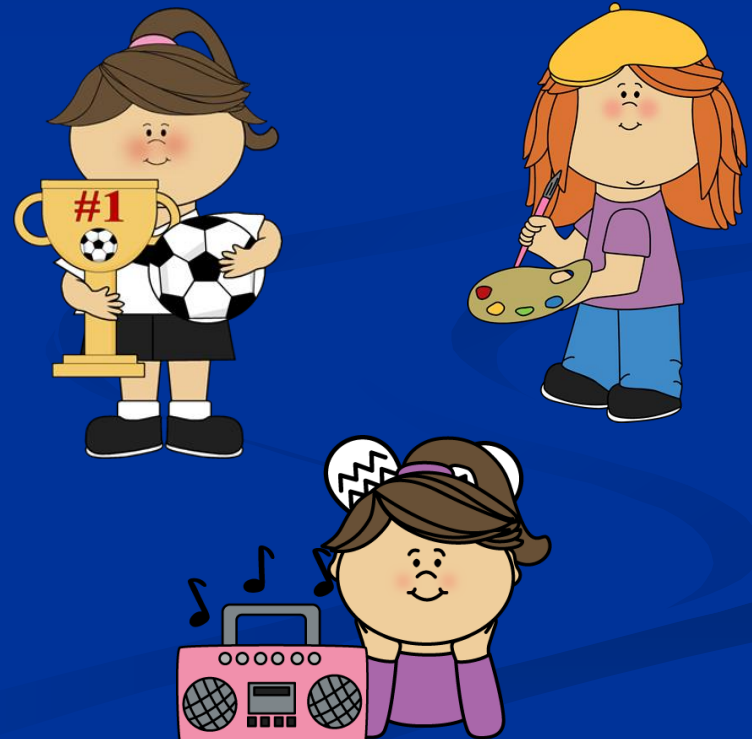
- Age – 16 years ideally
- Understanding test instructions
- Special Educational Needs (SEN) (e.g. Dyslexia)
- Language barriers
- Illness/Injury
- Calculators/Phones
- Type of school



# Other Abilities

Remember DATs are not perfect and do not show other important abilities you may have including:

- Creative ability
- Artistic ability
- Social ability
- Musical ability
- Athletic ability, etc.



# Final Words of Wisdom

- Aptitude tests like DATs are very useful indicators of a student's potential.
- They do not guarantee students will be successful without the usual back-ups of hard work and personal motivation.



# Final Words of Wisdom



- Results are intended as an aid to students/parents/guardians, to help make decisions about Senior Cycle subject choice.
- Students should use their DAT results in **conjunction** with: school tests, teachers' advice, interests, personality, etc. when deciding which subjects / careers may suit them most.

# Further Discussion

- Parents/Guardians/students are always welcome to make an appointment with the Guidance Counsellor.
- Guidance Counsellor:  
Aisling McDonald
- Phone: (053) 9234245

